

COBBLESTONE LAKE NORTH SHORE 2ND ADDITION

**APPLE VALLEY CITY COUNCIL
PRESENTATION
APRIL 28, 2016**



COBBLESTONE LAKE NORTH SHORE 2ND ADDITION

Request For:

- 1. Amendment to the 2030 Comprehensive Plan Land Use Map re-designating Outlot B, COBBLESTONE LAKE COMMERCIAL 3RD ADDITION from "MD" (Medium Density Residential/6-12 units per acre) to "LD" (Low Density Residential/2-6 units per acre).**
- 2. Rezoning to Planned Development 703/zone 2A.**
- 3. Subdivision of 11.57 acres in 47 single family lots.**



PROPOSED COMPREHENSIVE PLAN LAND USE MAP DESIGNATION



Low Density Residential/2-6 Units Per Acre



EXISTING ZONING MAP



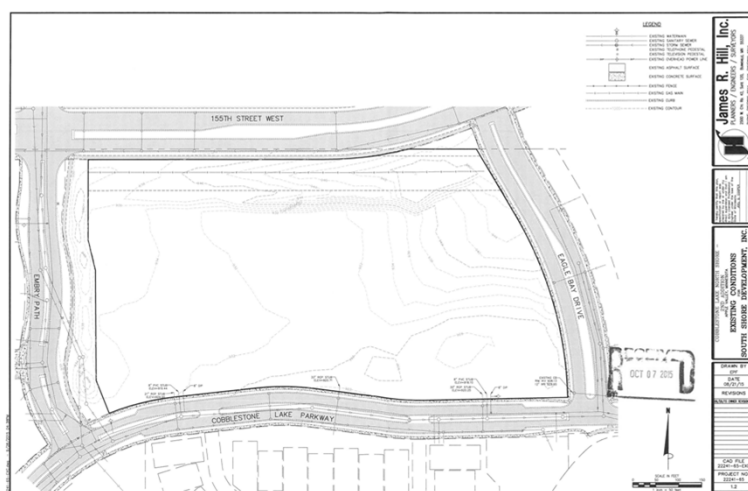
Planned Development No. 703/Zone 8



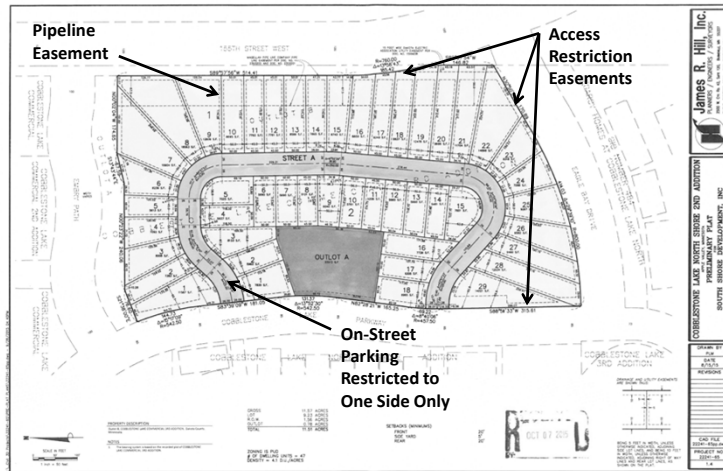
PROPOSED ZONING MAP

**Planned Development No. 703/Zone 2A**

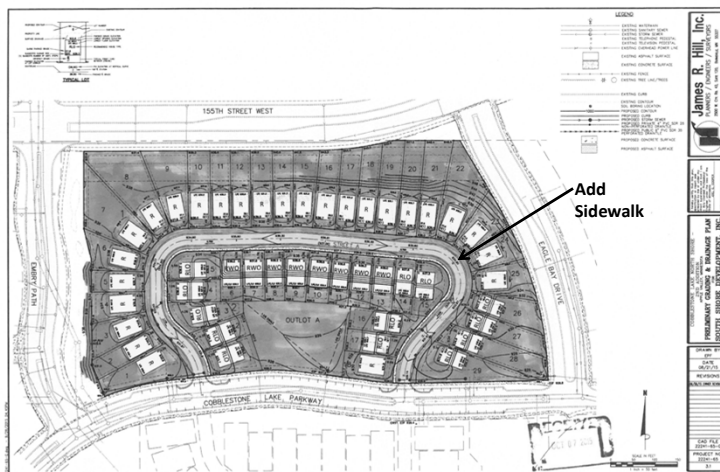
EXISTING CONDITIONS



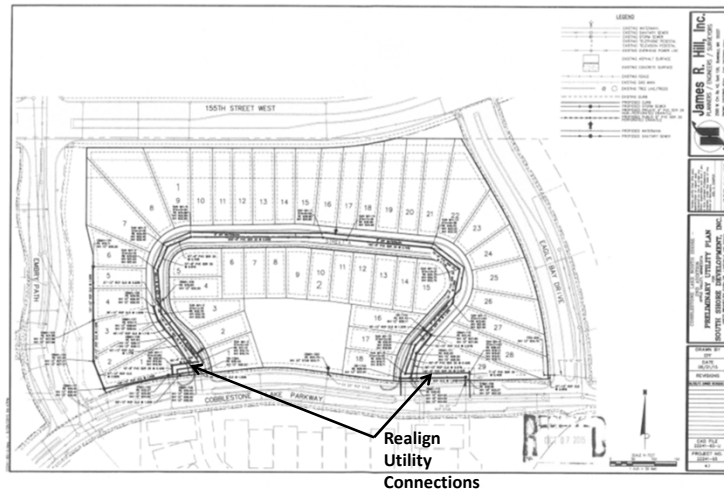
PRELIMINARY PLAT



GRADING PLAN



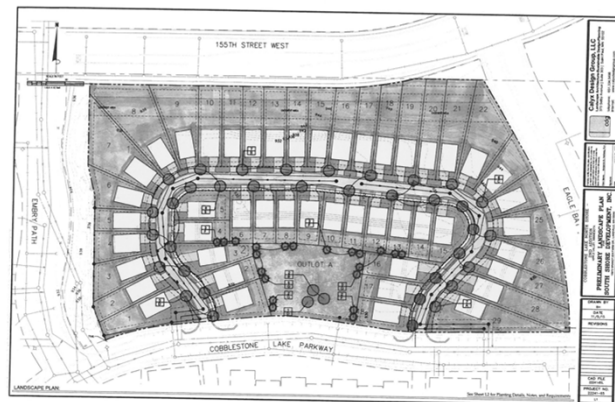
UTILITY PLAN



Realign
Utility
Connections



LANDSCAPE PLAN



COBBLESTONE LAKE NORTH SHORE 2ND ADDITION

RECOMMENDATION

- 1. Adopt resolution approving the amendment to the 2030 Land Use Map to re-designate Outlot B, COBBLESTONE STONE LAKE COMMERCIAL 3RD ADDITION from “MD”(Medium Density Residential/6-12 units per acre) to “LD” (Low Density Residential/2-6 units per acre).**
- 2. Approve rezoning of Blocks 1 and 2 and Outlot A, COBBLESTONE LAKE NORTH SHORE 2ND ADDITION according to the preliminary plat, from Planned Development No. 703/zone 8 to Planned Development No. 703/zone 2A.**
- 3. Adopt resolution approving COBBLESTONE LAKE NORTH SHORE 2ND ADDITION preliminary plat.**

